



DUTCHMAN®

Martinus Van Breems, Inc.

160 Water Street Norwalk, CT 06854

Tel. 203-838-0375 Fax 203-838-0377

RIGGING the DUTCHMAN System A

December 1993

This sail is equipped with the Dutchman System A. The system consists of nylon monofilament control lines that weave through fairleads in the sail, and run down to tabs sewn into the base of the sail. Nylon discs on both sides of the tab secure the control line to the tab. The top of the control lines attach to a vinyl coated wire pennant. This pennant is hoisted up by a halyard style topping lift.

Contact us if you didn't receive a **Dutchman A Owner's Manual**.

A. Parts Check

Make sure the following components are included with the sail:

- 2 sets of glass filled nylon discs to attach the control lines to the tabs in the foot of the sail.
- 1 Topping lift pennant, which is vinyl coated wire, made up with the following parts:
 - Nylon Monofilament control lines attached with our black, glass filled swivel clamps.
 - A shackle attached to the bottom of the pennant.

B. Rig the Topping Lift Pennant

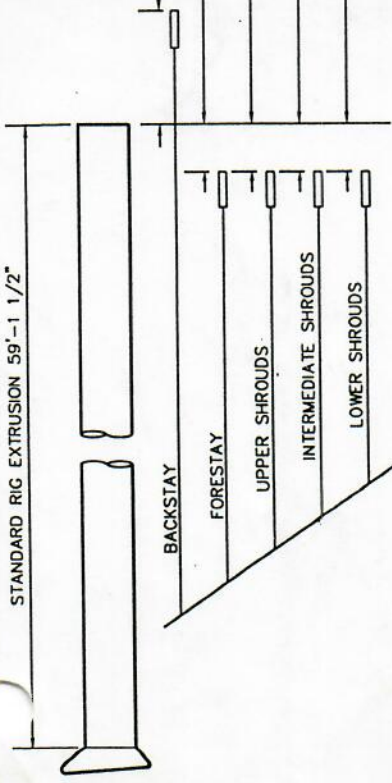
Rig the topping lift pennant after the mast is stepped.

1. Remove the pennant from the bag, and carefully uncoil it. Attach the bottom to the end of the boom with the supplied shackle. Then uncoil the control lines.
2. Attach the top end to the halyard style topping lift and hoist it up.

C. Adjust the Topping Lift Clamps

1. Hoist the main, tension the sheet and topping lift. Walk about 2 boat lengths away, and check that the black clamps are **above** the uppermost grommet, and reasonably in line.
2. Adjust the distance between the clamps if needed. This is done by dropping down the topping lift pennant to the clamp, loosening and moving the donut clamp, and retightening

STANDARD RIG EXTRUSION 59'-1 1/2"



STANDARD	TOP FITTING	BOTTOM FITTING
1'-3"	STEM BALL	5/8" STUD
5'-0"	EYE/STEM BALL*	5/8" STUD
7'-4 1/2"	STEM BALL	5/8" STUD
5'-11"	STEM BALL	5/8" STUD
6'-0"	STEM BALL	5/8" STUD

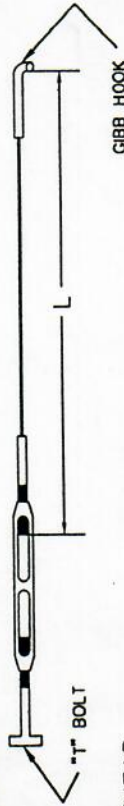
* SEE DETAIL BELOW

RUNNING RIGGING				
DESCRIPTION	MATERIAL	LENGTH	QTY.	
TOPPING LIFT TOP PENNANT	NOTE 2	3/16" 7x7 P.C.	48'-6"	1
TOPPING LIFT TAIL		3/8" DACRON	42'-0"	1
FOREGUY		7/16" DACRON	50' 0"	1
GENOA SHEET		1/2" DACRON	65' 0"	2
TRAVELER CONTROL LINES		5/16" DACRON	31' 0"	2
SPINNAKER SHEET		1/2" DACRON	85' 0"	2
MAINSHEET		1/2" DACRON	85' 0"	1

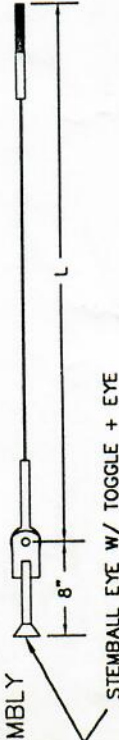
STANDING RIGGING			
DESCRIPTION	MATERIAL	LENGTH EYE to END of STUD	QTY.
BACKSTAY	3/8" WIRE 1x19	60'-4 5/8"	1
FORESTAY *	3/8" WIRE 1x19	53'-3"	1
UPPER SHROUDS	3/8" WIRE 1x19	53'-0"	2
INTERMEDIATE SHROUDS	5/16" WIRE 1x19	37'-5"	2
LOWER SHROUDS	3/8" WIRE 1x19	21'-2"	2
DECK TIEDOWN	3/16" WIRE 1x19	1'-5 3/8"	1

* FORESTAY LENGTH FOR SCHAEFER UNIT

DECK TIEDOWN ASSEMBLY



MASTHEAD TOGGLE ASSEMBLY



NOTES: 1) TOLERANCES + 1/2"

2) INCLUDED WITH SAIL AND IS AN INTEGRAL PART OF THE DUTCHMAN FLAKING SYSTEM.

HALYARDS			
DESCRIPTION	MATERIAL	LENGTH	QTY.
MAINSAIL HALYARD	1/2" YACHT BRAID BLUE	140'-0"	1
PORT HALYARD	1/2" YACHT BRAID RED	140'-0"	1
STARBOARD HALYARD	1/2" YACHT BRAID GREEN	140'-0"	1
SPINNAKER HALYARD	1/2" YACHT BRAID RED	140'-0"	1

Catalina Yachts

21200 VICTORY BLVD.
WOODLAND HILLS, CA.
91367-(818)884-7700

SCALE: NONE
DATE: 5-6-92

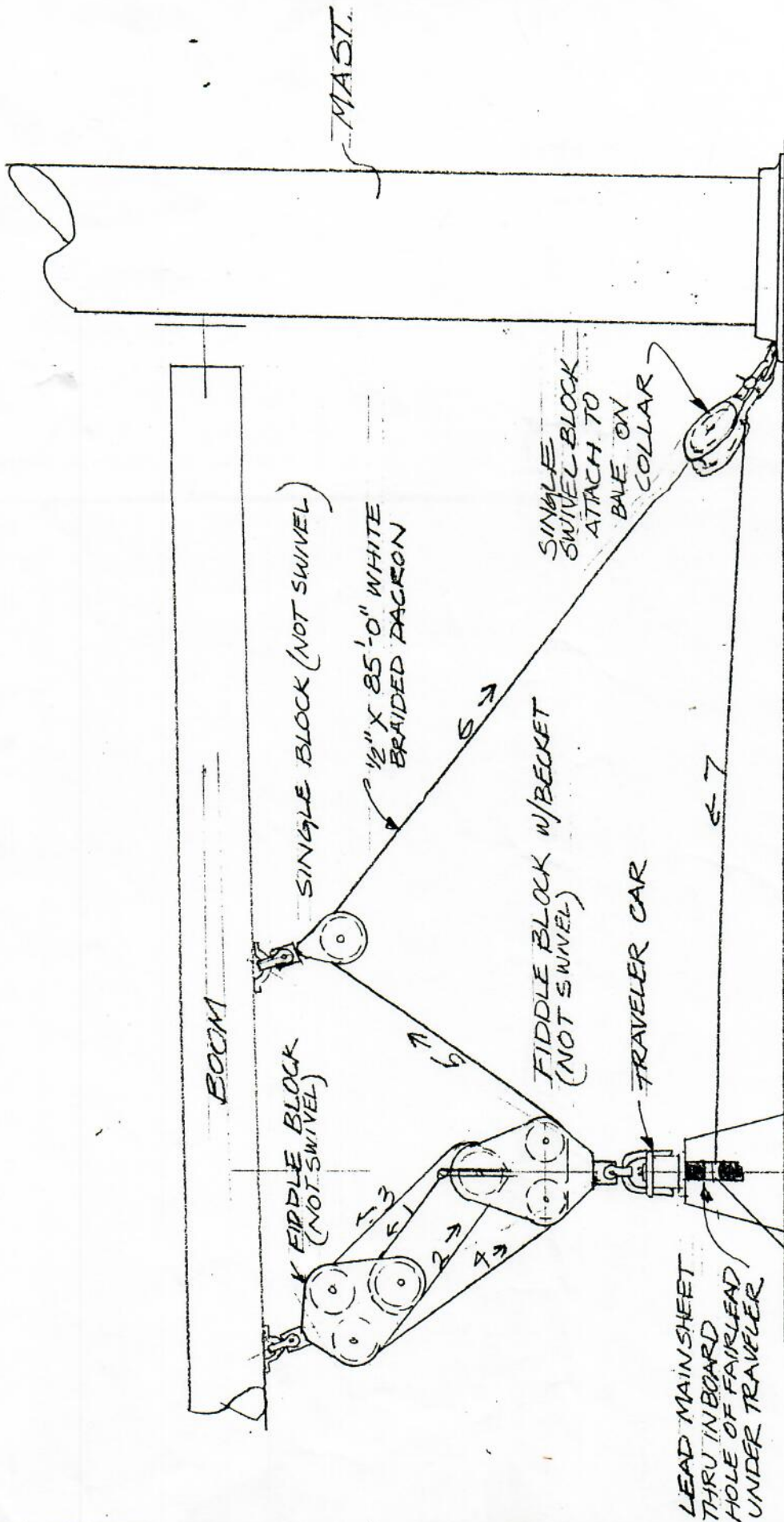
APPROVED BY:
DRAWN BY: DANIEL CASAL

REV. No	DESCRIPTION	DATE
14	TOPPING LIFT TAIL frm 27' to 42'	7-30-96
13	TRAVELER CONTROL LINES frm 26' to 31'	11-27-95
12	ADDED DUTCHMAN FLAKING SYSTEM NOTES	3-19-95
11	MK II-BACKSTAY FRM 60'-7 5/8" TO 60'-4 5/8"	11-23-94

RIGGING LENGTH

BOAT: CATALINA 42 MK II

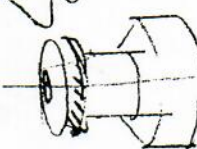
DRAWING NUMBER
420-34004-14



CATALINA YACHTS 21200 VICTORY BLVD. WOODLAND HILLS, CA		DRAWN BY GID REVISED
SCALE: 2	APPROVED BY:	
DATE: 7/29/80	MAINSHEET ASSEMBLY	
C-42-		DRAWING NUMBER 420-35001 -0

CLAM CLEAT ON DECK FOR MAINSHEET WHEN WINCH IS BEING USED FOR MAIN HALYARD OR REEFING.

NOTE - DO NOT LEAD MAINSHEET THRU LIGHT RED LOCK OUT ON CLEAT. THE LOCK OUT IS TO PREVENT THE MAINSHEET FROM ACCIDENTALLY ENGAGING IN CLEAT DURING NORMAL USE.



STD. AND FURLING MAST

PORT JIB HALYARD

SPINNAKER HALYARD

STARBOARD JIB HALYARD

BOOM TOPPING LIFT

(4) SINGLE STOPPERS

CLAM CLEAT

(4) SINGLE STOPPERS

STD. MAST

MAINSHEET

BOOM VANG

1st REEF

OPTIONAL 2nd REEF

MAIN HALYARD

FURLING MAST

MAINSHEET

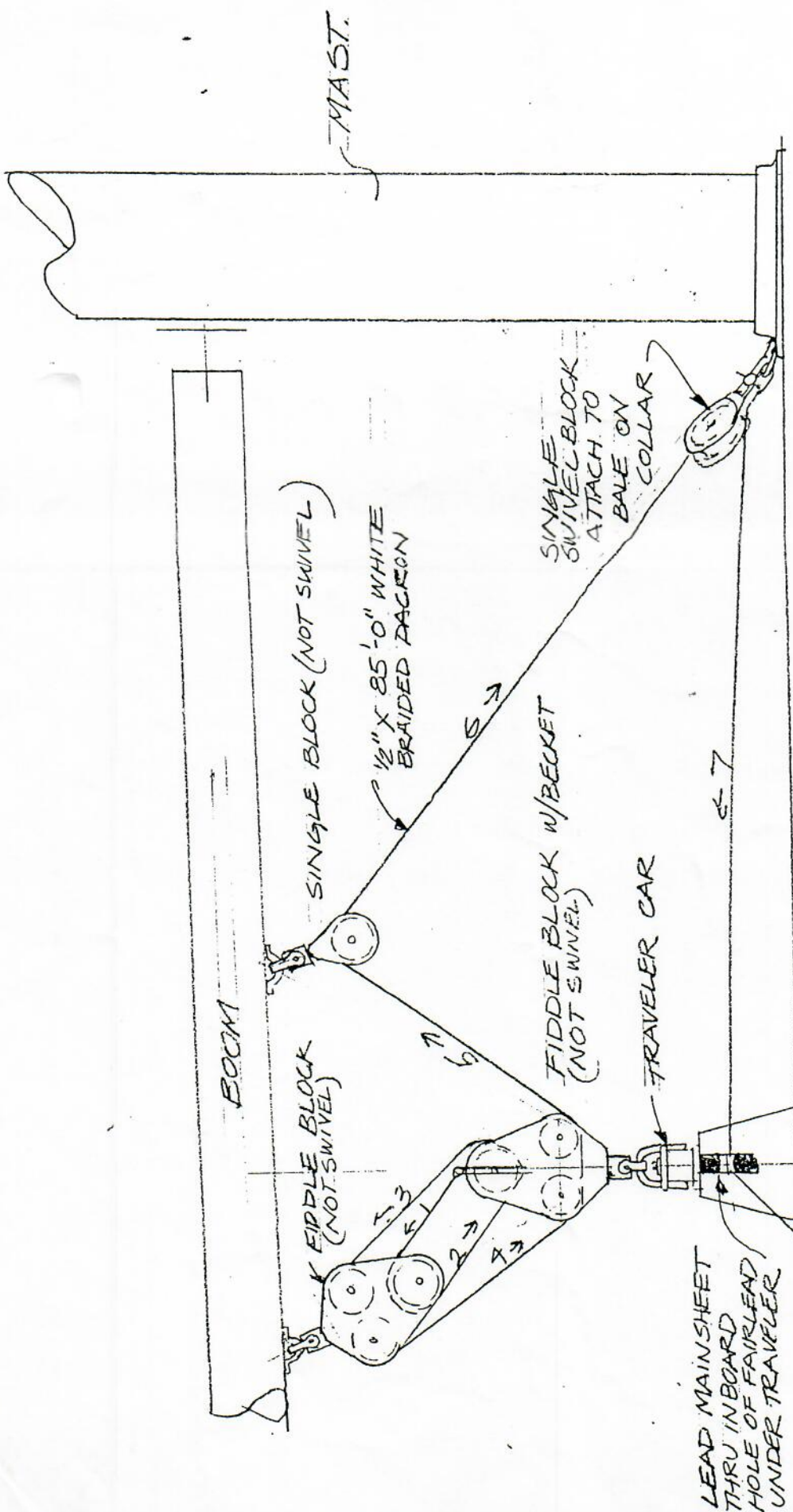
BOOM VANG

MAIN OUTHAUL

MAIN FURLING LINE

MAIN HALYARD

HALYARDS ARRANGEMENT



CATALINA YACHTS 21200 VICTORY BLVD. WOODLAND HILLS, CA		DRAWN BY G.D.
SCALE: ~	APPROVED BY:	REVISED
DATE: 7/29/88	MAINSHEET ASSEMBLY	
C-42		DRAWING NUMBER 420-35001 -0

CLAM CLEAT ON DECK FOR MAINSHEET WHEN WINCH IS BEING USED FOR MAIN HALYARD OR REEFING.
 NOTE - DO NOT LEAD MAINSHEET THROUGH RED LOCK OUT IS TO PREVENT THE MAINSHEET FROM ACCIDENTALLY ENGAGING IN CLEAT DURING NORMAL USE.

LEAD MAINSHEET THRU IN BOARD HOLE OF FAIRLEAD UNDER TRAVELER

TOPPING LIFT 48" O
DEADENDS & MASTHEAD
WITH BLOCK @ END

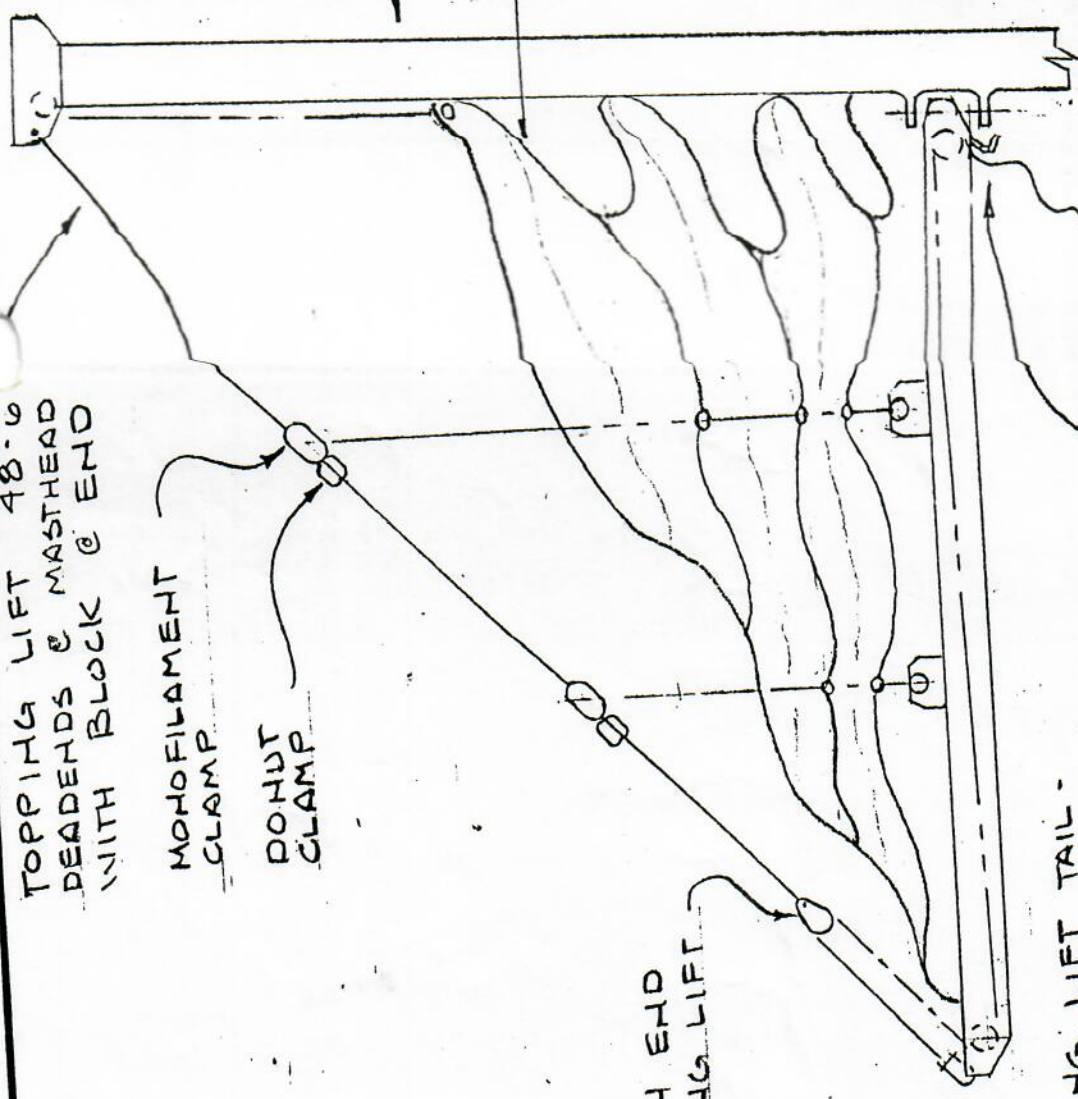
MONOFILAMENT
CLAMP

DOHUT
CLAMP

BLOCK ON END
OF TOPPING LIFT

TOPPING LIFT TAIL -
FASTENS TO 'D' SHACKLE
ON END OF BOOM THROUGH
BLOCK ON END OF TOPPING
LIFT, THROUGH BOOM &
CLEATS OFF ON FORWARD
END OF BOOM.

MAST
MAIN SAIL & FLAKING
LINES



CATALINA YACHTS
21200 VICTORY BLVD.
WOODLAND HILLS, CA

APPROVED BY:

SCALE: NONE

DATE: 2-12-92

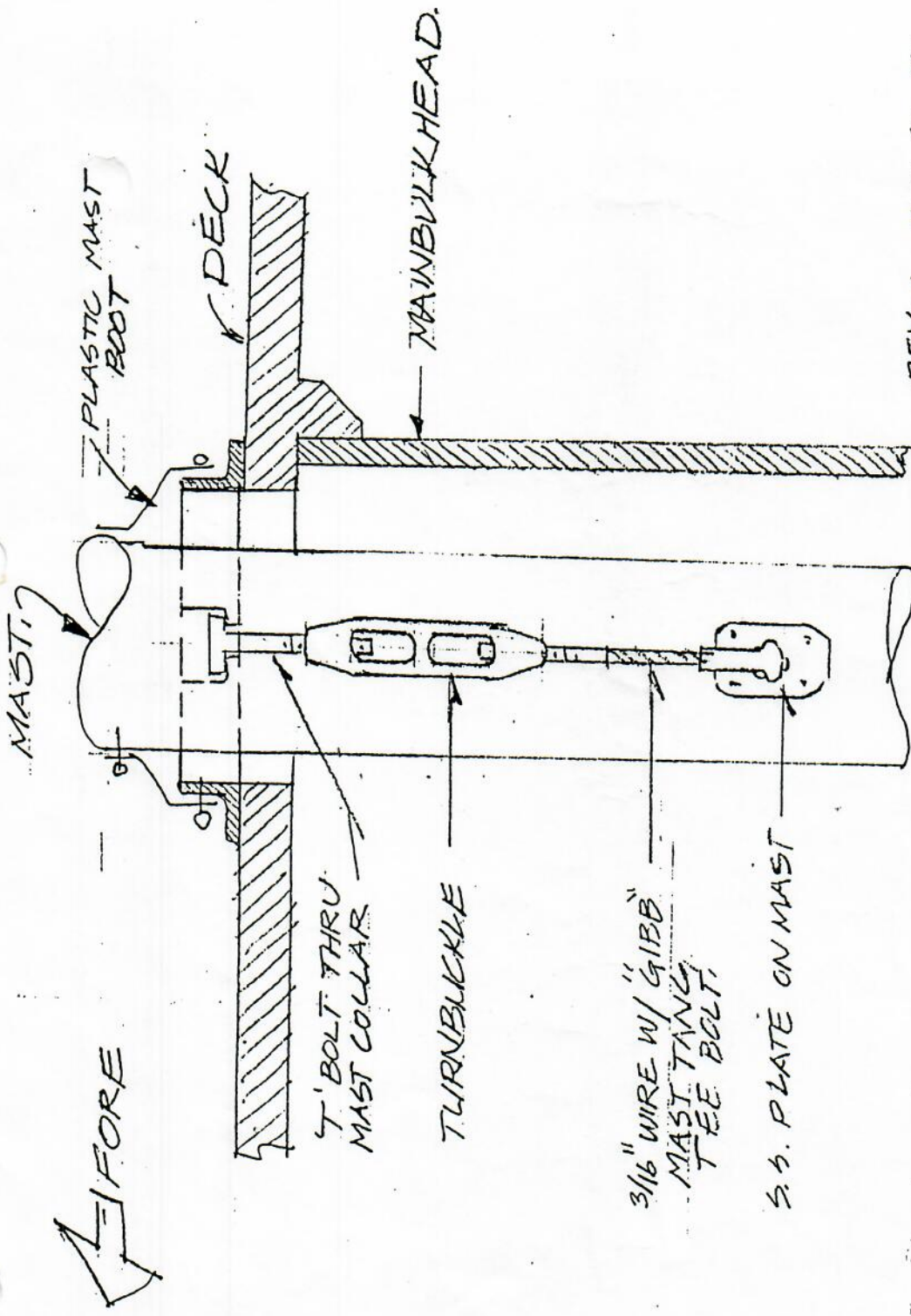
DRAWN BY GAB

REVISED

TOPPING LIFT ARRGT. FOR
DUTCHMAN FLAKING SYSTEM

CATALINA 42

DRAWING NUMBER
120-36005-1



REV - 1 11-14-88, T.P. WAS AFT.

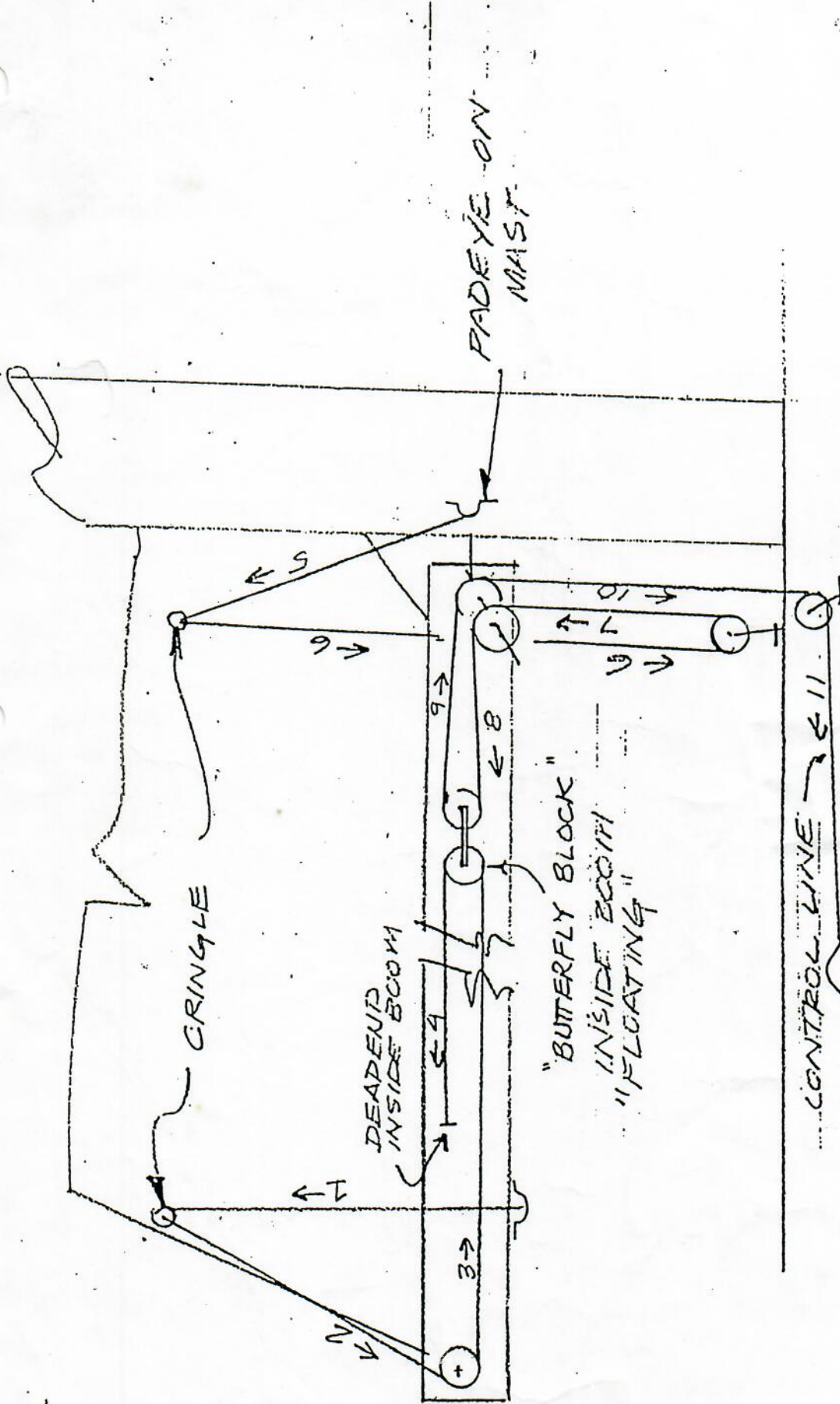
CATALINA MARINE
 21200 VICTORY BLVD.
 WOODLAND HILLS, CA

SCALE: 2
 DATE: 8/12/88
 APPROVED BY:
 DRAWN BY: GID
 REVISED 11-14-88

DECK TIE DOWN TURNBUCKLE
 INSTALLATION

CATALINA 42
 DRAWING NUMBER 1

VIEW FROM PORT

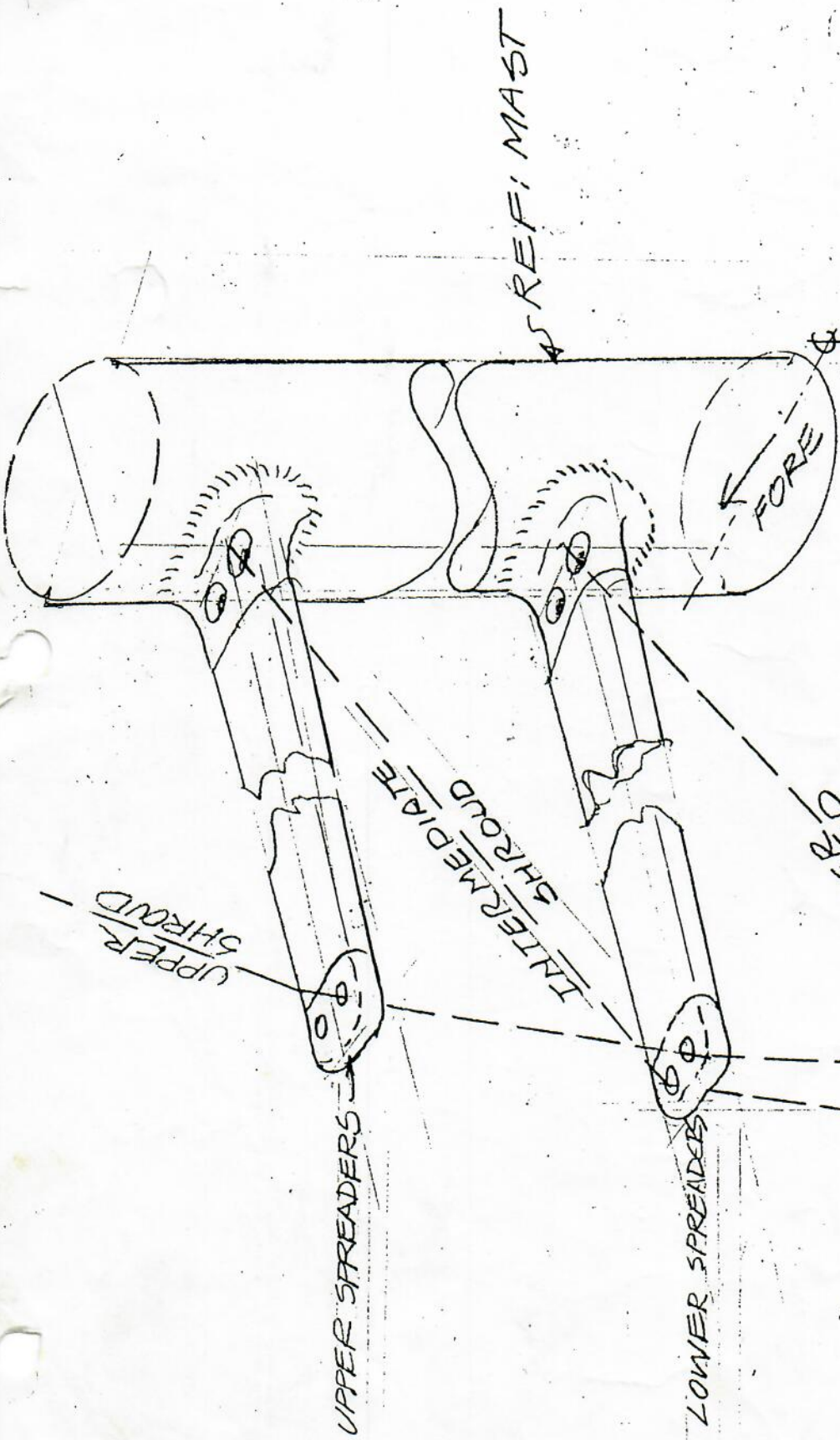


CATALINA YACHTS
 21200 VICTORY BLVD.
 WOODLAND HILLS, CA

SCALE: 2
 DATE: 8-28-87
 APPROVED BY: [Signature]
 DRAWN BY: G.D.
 REVISED:

SKETCH OF SINGLE LINE
 MAINSAIL REEFING SYSTEM

DRAWING NUMBER
 642
 -0



REV 1) INT SHROUD FROM FWD TO AFT HOLE 2-26-93

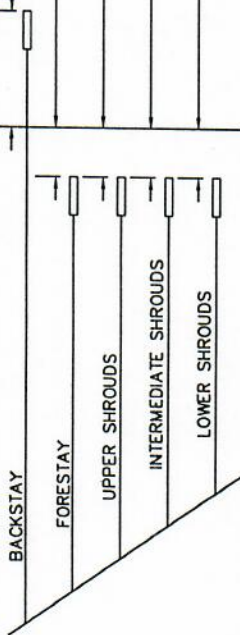
CATALINA YACHTS
 21200 VICTORY BLVD.
 WOODLAND HILLS, CA

SCALE: 1/2	APPROVED BY:	DRAWN BY: G.D.
DATE: 9-26-88		REVISED 2-26-93

SHROUD ARRANGEMENT

CATALINA 42	DRAWING NUMBER
	120-34004-1

STANDARD RIG EXTRUSION 59'-1 1/2"



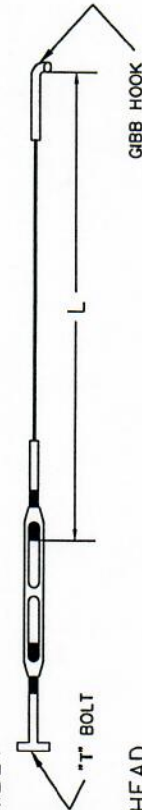
STANDARD	TOP FITTING	BOTTOM FITTING
1'-3"	STEM BALL	5/8" STUD
5'-0"	EYE/STEM BALL*	5/8" STUD
7'-4 1/2"	STEM BALL	5/8" STUD
5'-11"	STEM BALL	5/8" STUD
6'-0"	STEM BALL	5/8" STUD

* SEE DETAIL BELOW

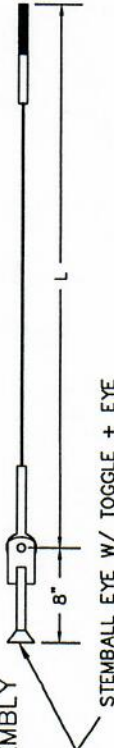
RUNNING RIGGING

DESCRIPTION	MATERIAL	LENGTH	QTY.	
TOPPING LIFT TOP PENNANT	NOTE 2	3/16" 7x7 P.C.	48'-6"	1
TOPPING LIFT TAIL		3/8" DACRON	27'-0"	1
FOREGUY		7/16" DACRON	50' 0"	1
GENOA SHEET		1/2" DACRON	65' 0"	2
TRAVELER CONTROL LINES		5/16" DACRON	26' 0"	2
SPINNAKER SHEET		1/2" DACRON	85' 0"	2
MAINSHEET		1/2" DACRON	85' 0"	1

DECK TIEDOWN ASSEMBLY



MASTHEAD TOGGLE ASSEMBLY



NOTES: 1) TOLERANCES + 1/2"

2) INCLUDED WITH SAIL AND IS AN INTEGRAL PART OF THE DUTCHMAN FLAKING SYSTEM.

STANDING RIGGING

DESCRIPTION	MATERIAL	LENGTH	QTY.
BACKSTAY	3/8" WIRE 1x19	60'-4 5/8"	1
FORESTAY *	3/8" WIRE 1x19	53'-3"	1
UPPER SHROUDS	3/8" WIRE 1x19	53'-0"	2
INTERMEDIATE SHROUDS	5/16" WIRE 1x19	37'-5"	2
LOWER SHROUDS	3/8" WIRE 1x19	21'-2"	2
DECK TIEDOWN	3/16" WIRE 1x19	1'-5 3/8"	1

* FORESTAY LENGTH FOR SCHAEFER UNIT

HALYARDS

DESCRIPTION	MATERIAL	LENGTH	QTY.
MAINSAIL HALYARD	1/2" YACHT BRAID BLUE	140'-0"	1
PORT HALYARD	1/2" YACHT BRAID RED	140'-0"	1
STARBOARD HALYARD	1/2" YACHT BRAID GREEN	140'-0"	1
SPINNAKER HALYARD	1/2" YACHT BRAID RED	140'-0"	1

Catalina Yachts

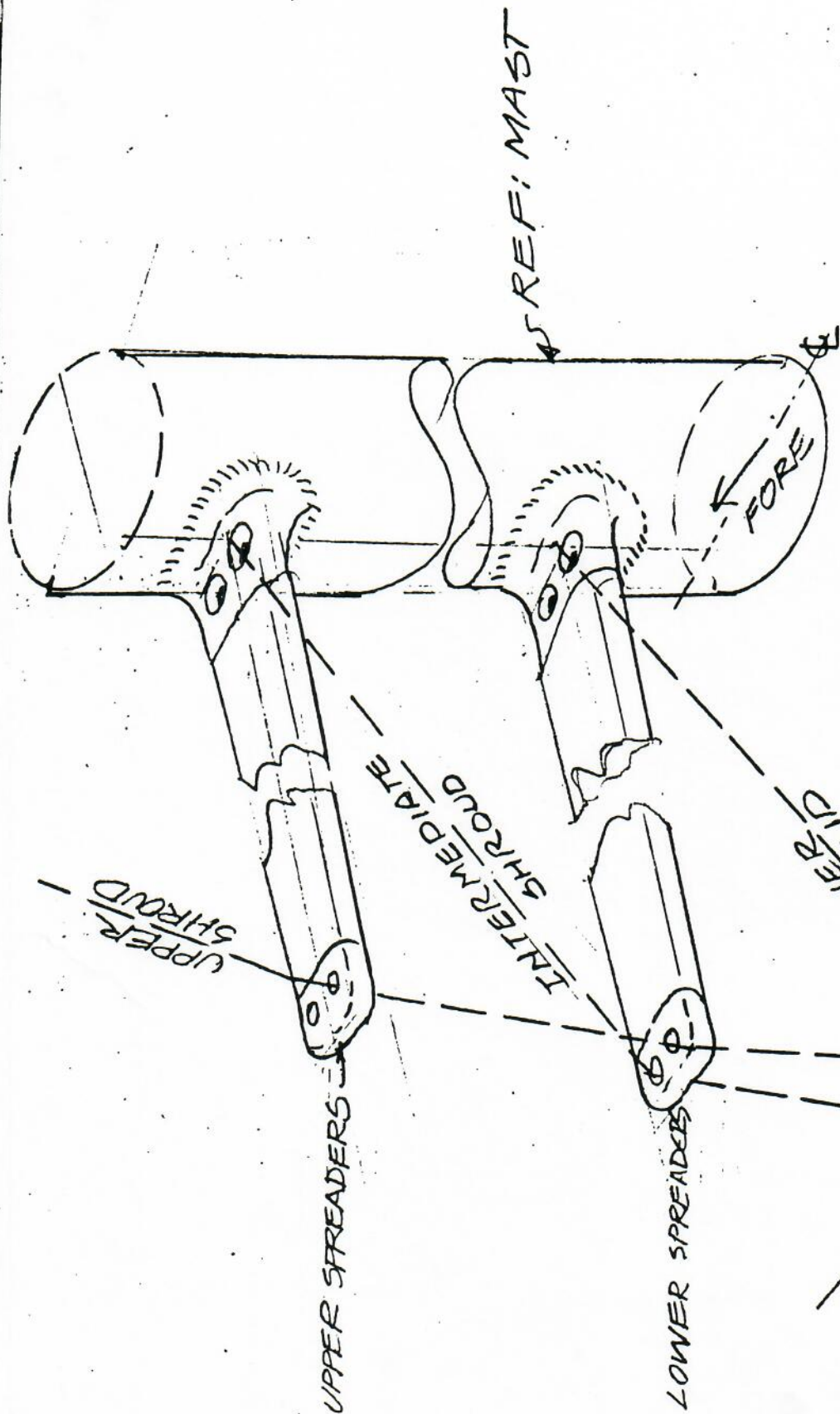
21200 VICTORY BLVD.
WOODLAND HILLS, CA.
91367-(818)884-7700

SCALE: NONE	APPROVED BY:	DRAWN BY
DATE: 5-6-92		DANIEL CASAL

RIGGING LENGTH

BOAT: CATALINA 42 MK II	DRAWING NUMBER
	420-34004-12

REV.Nº	DESCRIPTION	DATE
12	ADDED DUTCHMAN FLAKING SYSTEM NOTES	3-19-95
11	MK II-BACKSTAY FRM 60'-7 5/8" TO 60'-4 5/8"	11-23-94



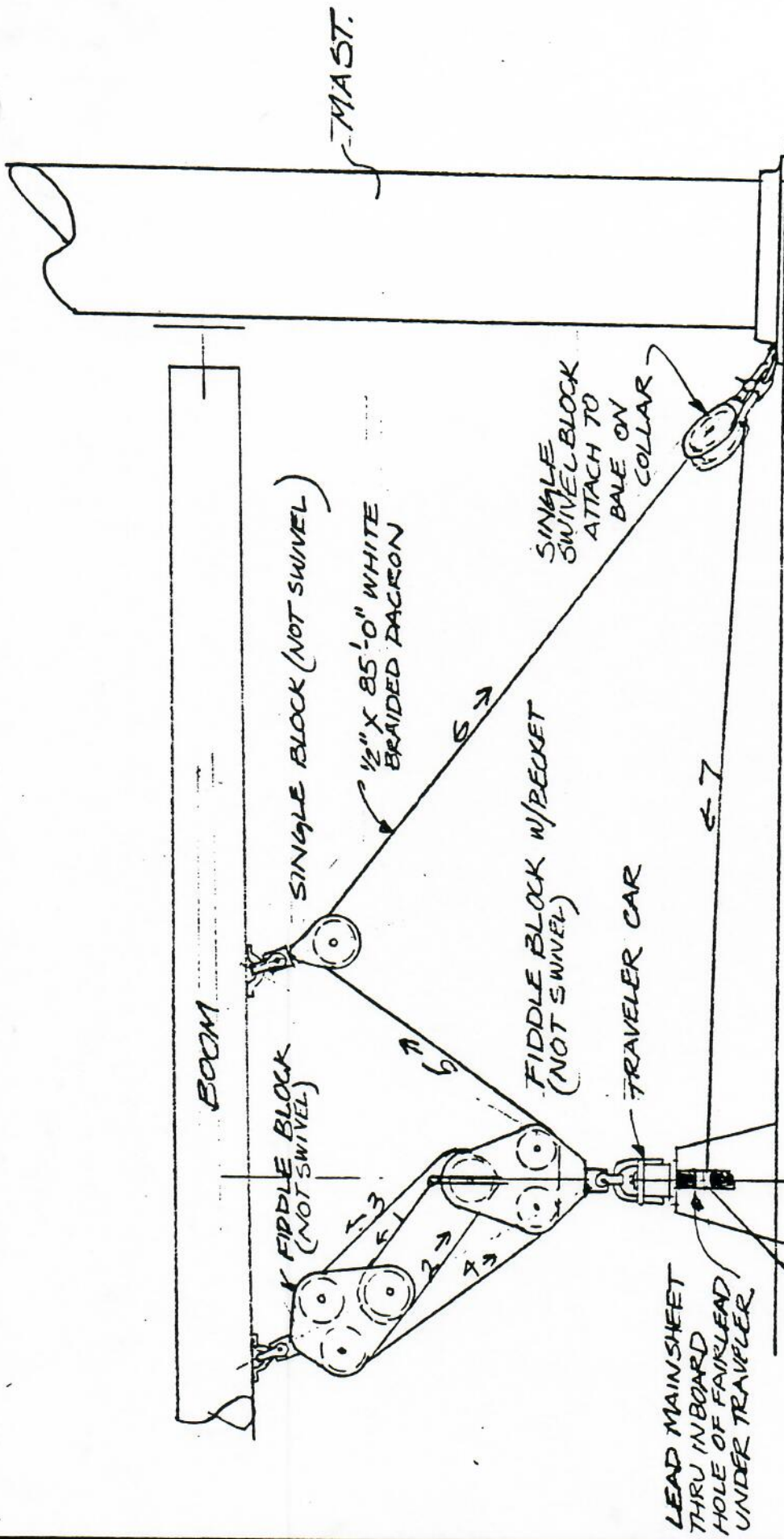
REV 1) INT SHROUD FROM FWD TO AFT HOLE 2-26-93

CATALINA YACHTS
 21200 VICTORY BLVD.
 WOODLAND HILLS, CA

SCALE: 1/2	APPROVED BY:	DRAWN BY G.D
DATE: 9-26-88		REVISED 2-26-93

SHROUD ARRANGEMENT.

CATALINA 42	DRAWING NUMBER
	120-39004-1



BOOM

FIDDLE BLOCK (NOT SWIVEL)

SINGLE BLOCK (NOT SWIVEL)

1/2" X 85'-0" WHITE BRAIDED DACRON

FIDDLE BLOCK W/BECKET (NOT SWIVEL)

TRAVELER CAR

LEAD MAINSHEET THRU INBOARD HOLE OF FAIRLEAD UNDER TRAVELER

CLAM CLEAT ON DECK FOR MAINSHEET WHEN WINCH IS BEING USED FOR MAIN HALYARD OR REEFING.
 NOTE - DO NOT LEAD MAINSHEET THROUGH RED LOCK OUT ON CLEAT THE LOCK OUT IS TO PREVENT THE MAINSHEET FROM ACCIDENTALLY ENGAGING IN CLEAT DURING NORMAL USE.

SINGLE SWIVEL BLOCK ATTACH TO BALE ON COLLAR

MAST

CATALINA YACHTS
 21200 VICTORY BLVD.
 WOODLAND HILLS, CA

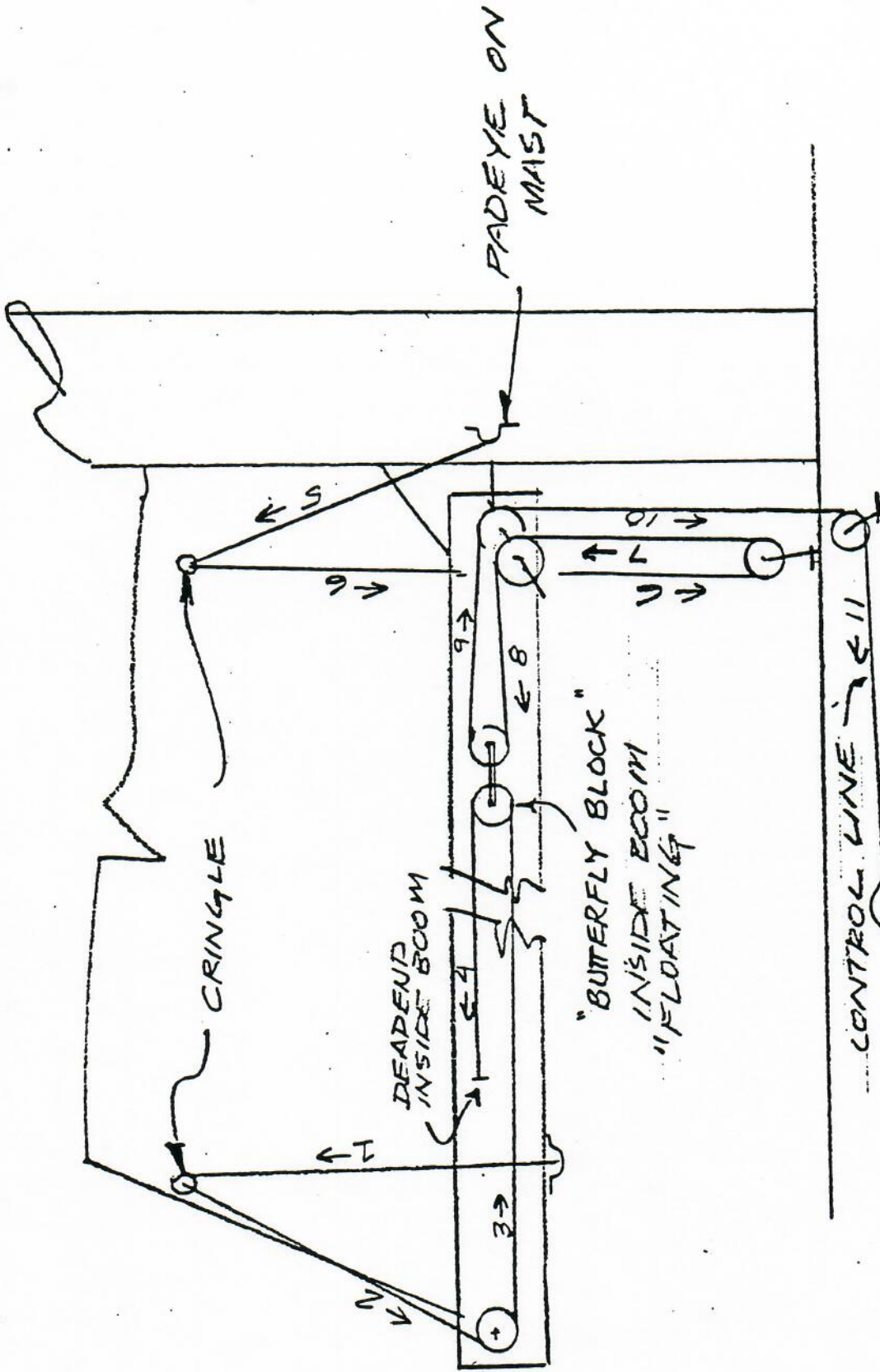
DRAWN BY G.D
 REVISED

APPROVED BY: [Signature]
 SCALE: 1/2
 DATE: 7/27/88

MAINSHEET ASSEMBLY

DRAWING NUMBER
 420-35001-0

C-42-



CATALINA YACHTS
 21200 VICTORY BLVD.
 WOODLAND HILLS, CA

SCALE: 2
 DATE: 8-28-87
 APPROVED BY:
 DRAWN BY: G D
 REVISED:

SKETCH OF SINGLE LINE
 MAINSAIL REEFING SYSTEM

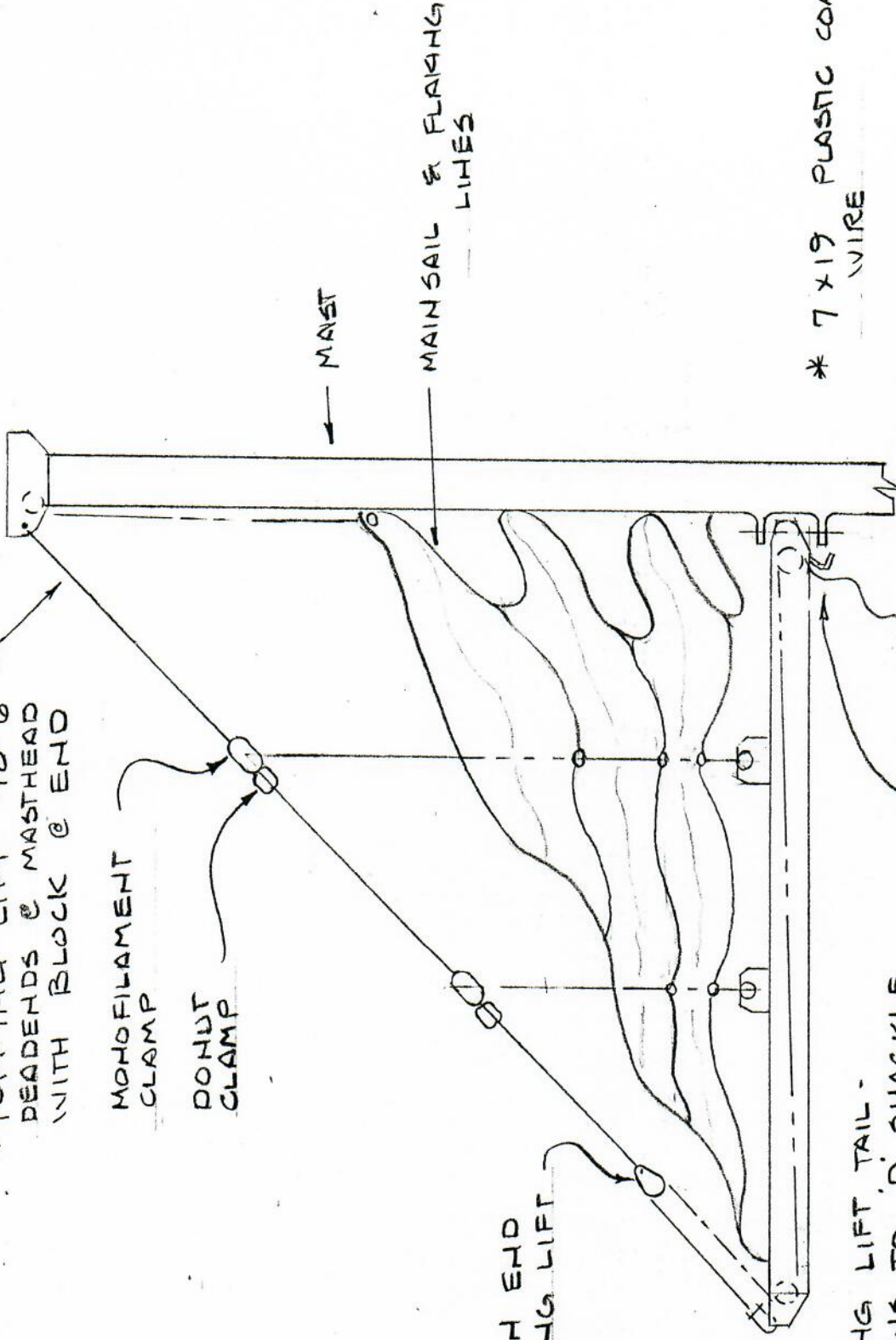
DRAWING NUMBER
 242
 -0

* TOPPING LIFT 48'-6"
 DEADENDS @ MASTHEAD
 WITH BLOCK @ END

MONOFILAMENT
 CLAMP

DOHUT
 CLAMP

BLOCK ON END
 OF TOPPING LIFT



* 7 x 19 PLASTIC COATED
 WIRE

CATALINA YACHTS
 21200 VICTORY BLVD.
 WOODLAND HILLS, CA

SCALE: NONE

DATE: 2-12-92

APPROVED BY:

DRAWN BY GB

REVISED

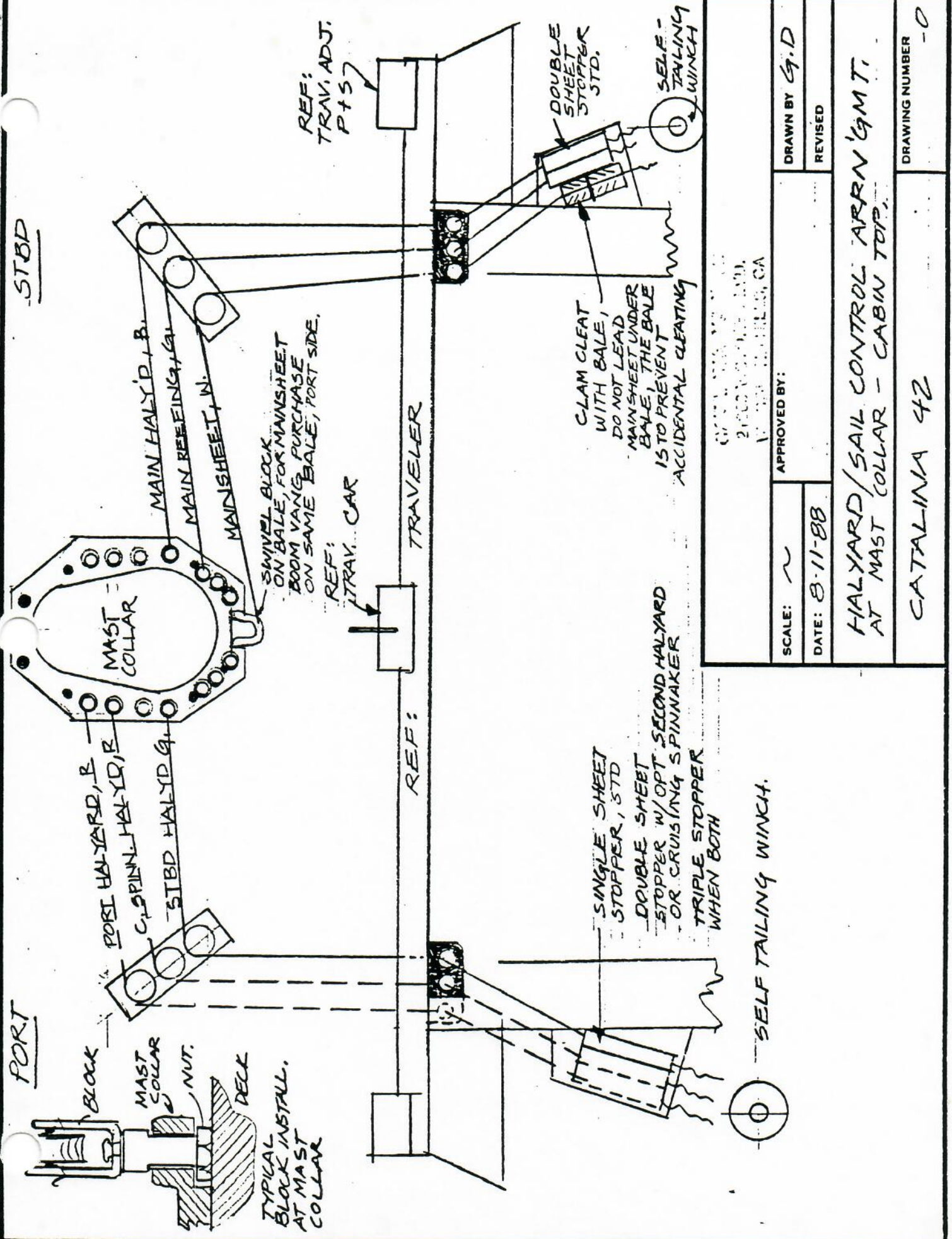
TOPPING LIFT ARRGT. FOR
 DUTCHMAN FLAKING SYSTEM

CATALINA 42

DRAWING NUMBER
 42-36005-1

STBD

PORT



SWIVEL BLOCK ON BALE, FOR MAINSHEET BOOM VANG PURCHASE ON SAME BALE, PORT SIDE.

REF: TRAV. CAR

REF: TRAV. ADJ. P15

CLAM CLEAT WITH BALE, DO NOT LEAD MAINSHEET UNDER BALE, THE BALE IS TO PREVENT ACCIDENTAL CLEATING

SINGLE SHEET STOPPER, STD
 DOUBLE SHEET STOPPER W/OPT SECOND HALYARD OR CRUISING SPINNAKER
 TRIPLE STOPPER WHEN BOTH

SELF TAILING WINCH.

DOUBLE SHEET STOPPER STD.

SELF-TAILING WINCH

2000 ... CA

SCALE: ~ APPROVED BY:

DATE: 8-11-88

DRAWN BY G.D

REVISED

HALYARD/SAIL CONTROL ARR'N GMT, AT MAST COLLAR - CABIN TOP.

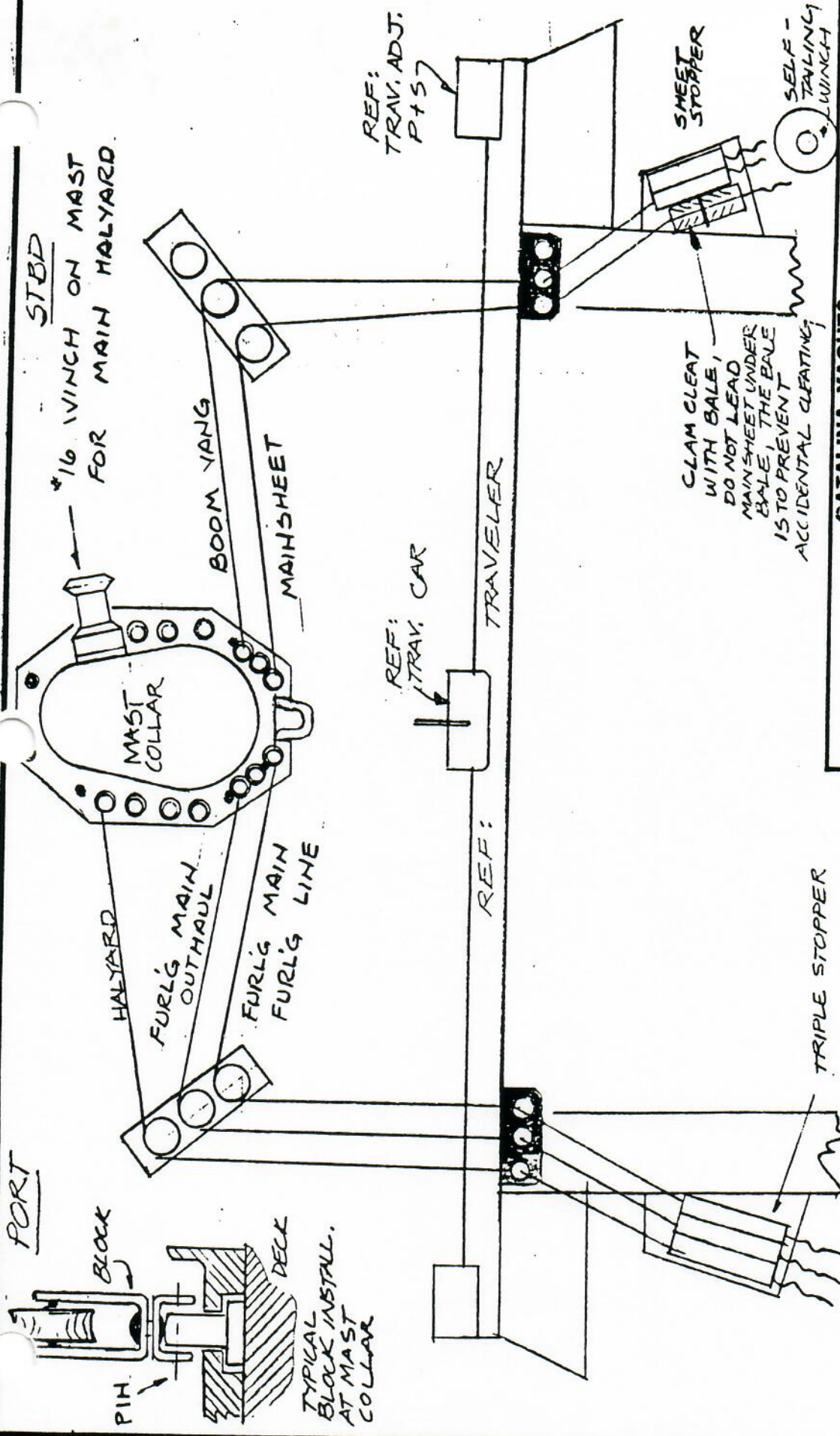
CATALINA 42

DRAWING NUMBER

-0

PORT

STBD
*1/6 INCH ON MAST
FOR MAIN HALLYARD.



REF:
TRAV. ADJ.
P+57

REF:
TRAV. CAR

TRAVELER

REF:

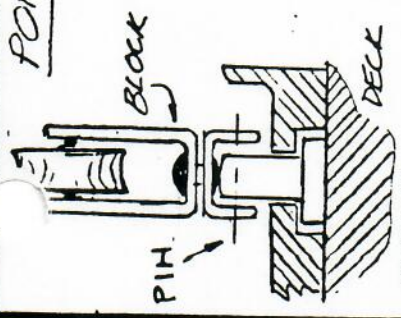
SHEET
STOPPER

SELF-
TAILING
WINCH

CLAM CLEAT
WITH BALE,
DO NOT LEAD
MAINSHEET UNDER
BALE, THE BALE
IS TO PREVENT
ACCIDENTAL CLEATING

TRIPLE STOPPER

SELF TAILING WINCH.



TYPICAL
BLOCK INSTALL.
AT MAST
COLLAR

CATALINA YACHTS
21200 VICTORY BLVD.
WOODLAND HILLS, CA

APPROVED BY:

SCALE: ~

DATE: 8-11-88

DRAWN BY G.D

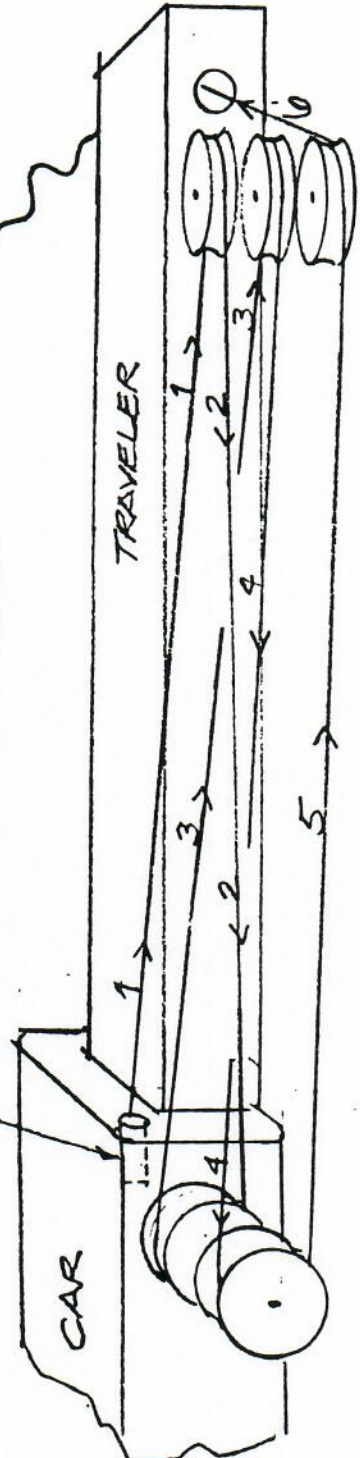
REVISED

HALLYARD / MAINSAIL FURL'G CONTROL ASSEMBLY.
AT MAST COLLAR - CABIN TOP,

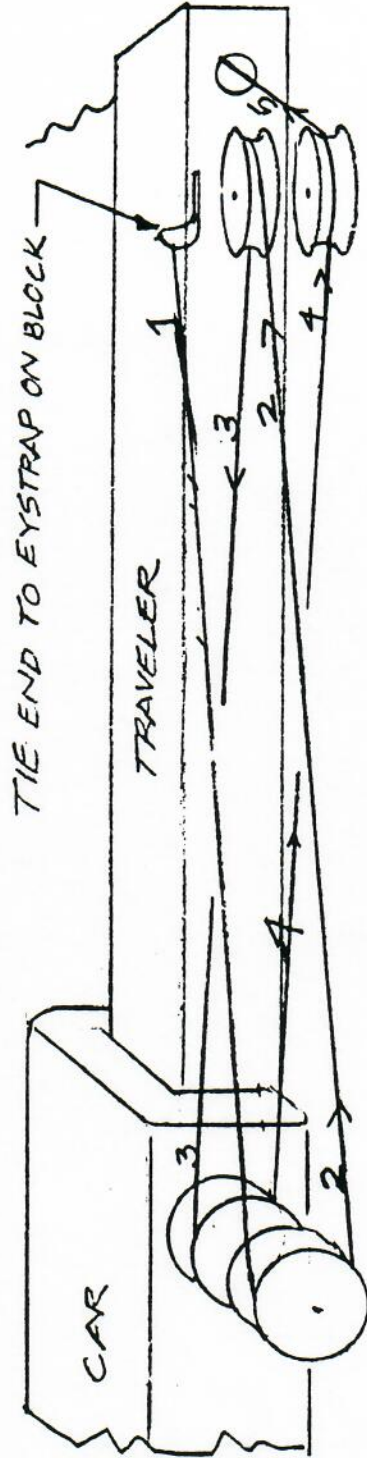
CATALINA 42

DRAWING NUMBER
420-35004-0

CLAMP END OF LINE TO CAR WITH SET SCREW



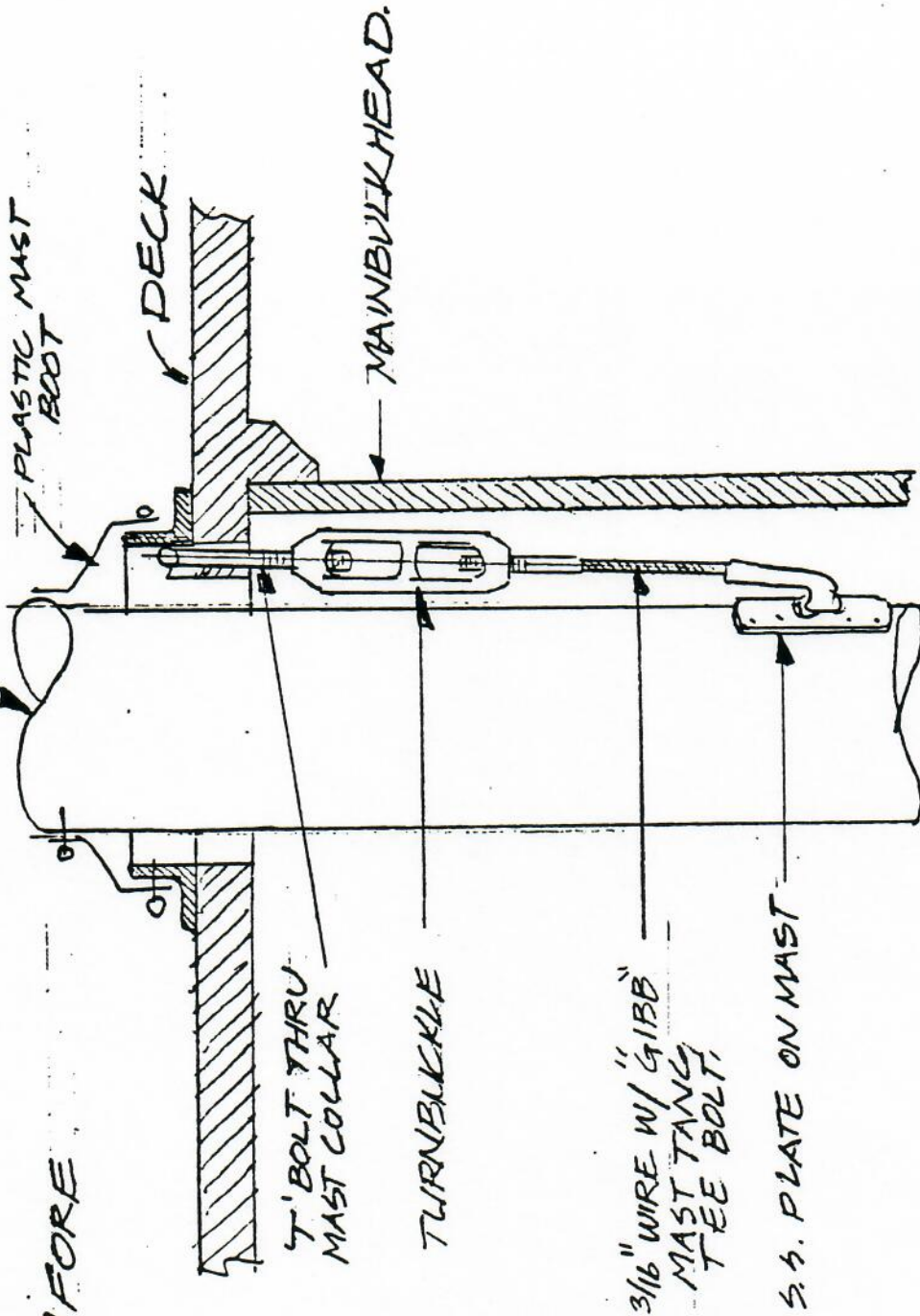
5:1 TRAVELER CONTROL LINE ARRANGEMENT
VIEW OF PORT SIDE, FORWARD



TIE END TO EYESTRAP ON BLOCK

4:1 TRAVELER CONTROL LINE ARRANGEMENT
VIEW OF PORT SIDE, FORWARD.

CATALINA YACHTS 21200 VICTORY BLVD. WOODLAND HILLS, CA		DRAWN BY G.D. REVISED
SCALE: ~	APPROVED BY:	
DATE: 12.26, 91	TRAVELER CONTROL LINE ARRANGEMENT FOR GARHAUER BRAND TRAVELERS	
C-28, 30, 34, 36, 42		DRAWING NUMBER 280-35009-0



CATALINA YACHTS
 21200 VICTORY BLVD.
 WOODLAND HILLS, CA

SCALE: 2
 DATE: 8/12/88
 APPROVED BY:
 DRAWN BY GID
 REVISED

DECK TIE DOWN TURNBUCKLE
 INSTALLATION

CATALINA 42
 DRAWING NUMBER - 0